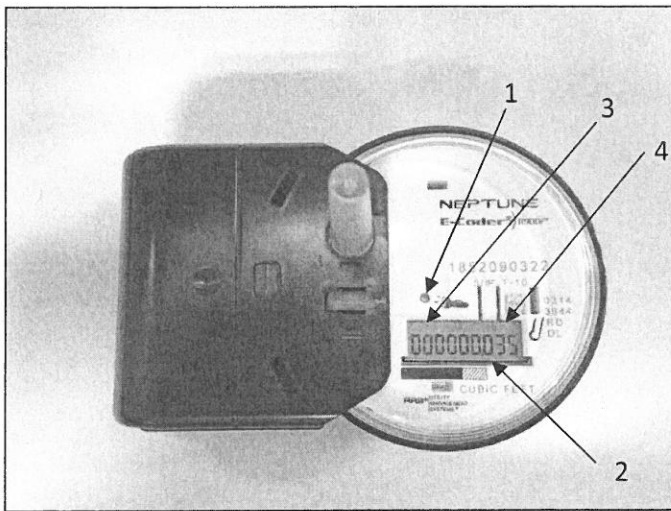


Explaining Your New Neptune Water Meter



1 - Light Sensor

There is a recessed sensor under the small hole near the center of the faceplate, which supplies the power for the LCD panel (light activated). A common household flashlight pointed at the light sensor will revive the meter from “sleep” mode.

2 - Reading Screens

The meter shown in the photo is displaying a 9-digit water meter reading in cubic feet of water consumption.

3 - Leak Indicator displays a possible leak with a dripping faucet icon in the upper left corner of the LCD panel.



OFF
Flashing

No leak indicated.
Intermittent usage or leak indicated. Water usage/leak detected during at least 50 of the 96 15-minute intervals during the last 24-hour period.
On Continuously
Continuous usage or leak indicated. Water used during all 96 15-minute intervals during the last 24-hour period.

4 - Flow Indicator shows the direction of flow through the meter with an arrow icon in the upper right corner on the LCD panel.



ON
OFF
Flashing
(-)
(+)

Water in use
Water not in use
Water running slowly
Reverse flow
Forward flow

READING YOUR NEPTUNE WATER METER

Hold a bright flashlight on the light sensor (As described in “1-Light Sensor” above).

The LCD display will display 2 intermittent display screens:

- Meter reading to the nearest thousandth (3 decimal places).
- Rate of flow.

To check for a water leak, examine the rate of flow display:

- Shut off all water in the house.
- Activate the meter using a flashlight.
- Observe the rate of flow display screen.
- An observed rate reading of greater than 0.000, corresponds to water moving through the meter. If all water has been shut-off then a leak may exist in your water system at some point between your water meter and your faucets and other water fixtures.
- Contact a licensed plumber to identify and remedy the problem as soon as possible to avoid excessive billing.